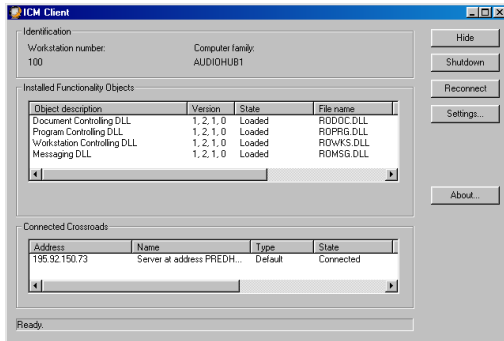


## Show & Tell Uninstall Procedures

### STEP 1 – Close down all programs

There may be up to two Show & Tell programs running on your PCs in the background and there will be no visible indication. You must shutdown these prior to performing the uninstall procedures.

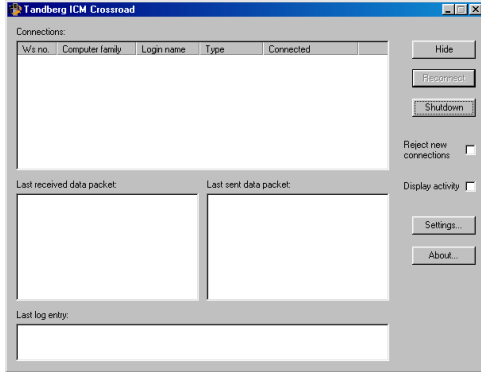


To turn off the Client program:

1. Click the Start button.
2. Click Run.
3. Type the command `rcInt.exe -ui` in the Run window. The Show & Tell Client interface opens.
4. Click SHUTDOWN. The connection to the Crossroad Server will be disconnected and the Client interface will close.
5. Repeat this at every client PC (all students and teachers).

### STEP 2 – Close down the Crossroad Server

Go to the workstation with the Crossroad Server application installed. For schools with a site license this application will be on a server. For a classroom license this will be on the teacher PC.



1. Click the Start button.
2. Click Run.
3. Type the command `rsrv.exe -ui` in the Run window. The Show & Tell Crossroad Server interface opens.
4. Click on SHUTDOWN and the Crossroad interface will automatically close.

### STEP 3 – Run the Add/Remove Program routines

Go to CONTROL PANEL and double-click on the ADD/REMOVE PROGRAMS option. Select each of the Show & Tell entries from the list (in turn) and remove.

### STEP 4 – Remove any legacy entries (if required)

You may need to manually delete the following from the teacher PCs.

Directory:

C:\program files\earthwalk\show and tell

Registry entry:

HKEY\_LOCAL\_MACHINE\Software\earthwalk\showandtell